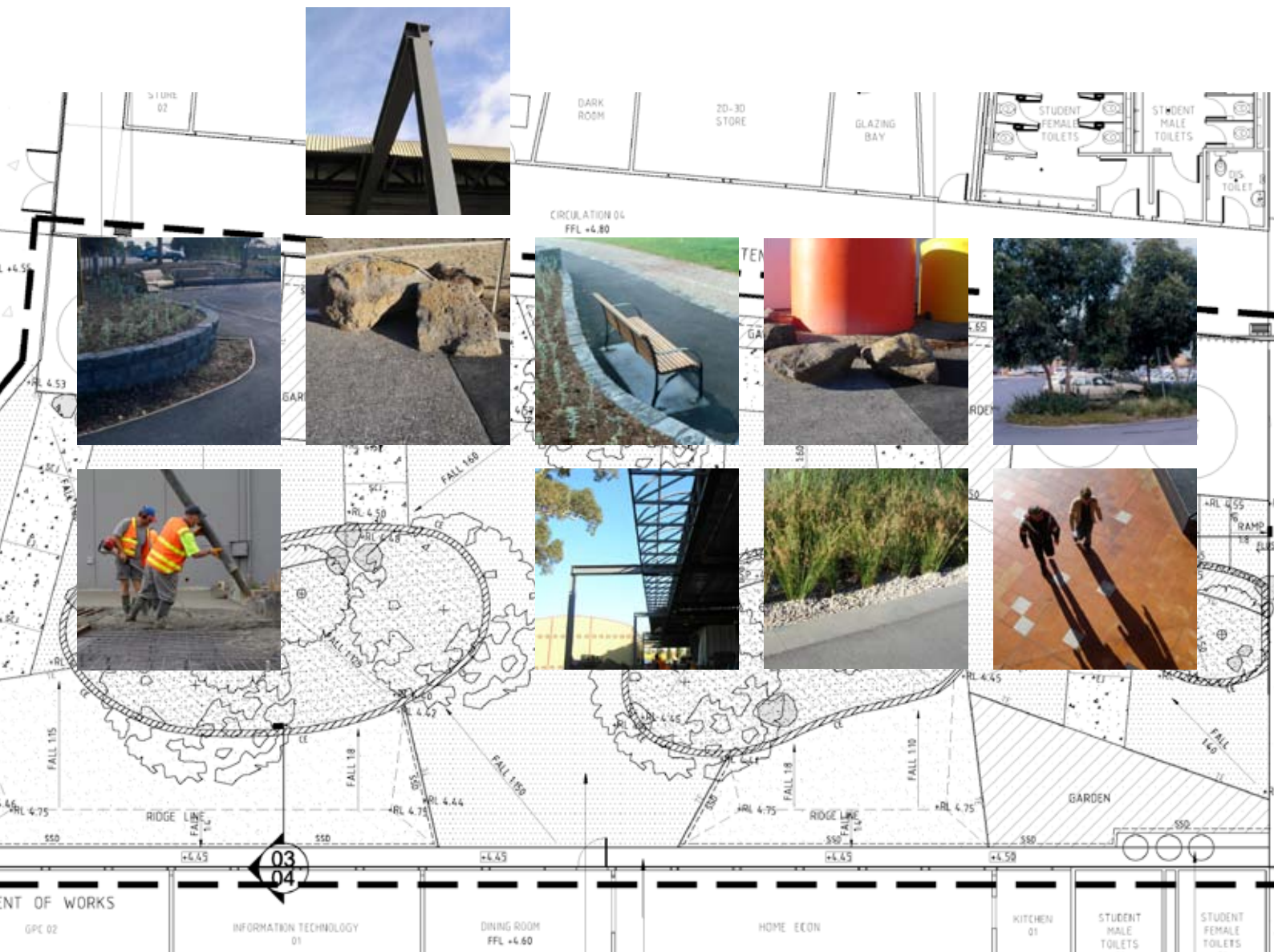


*Preserving  
and building  
more liveable,  
more sustainable  
communities*

**B F C**



When selecting a company to work on your construction projects you need to choose someone who is not only experienced and an expert in the field, but who can also take an overview of the project, understand your specific requirements and work with you to solve problems.

We have developed a solid reputation for quality work in the fields of hard landscaping, paving, roads and drainage as well as in the engineering, industrial and petrochemical industry. We are recognised road-works contractors to Victorian State and Local Governments.

*Further information on the scope of our projects can be found on our website*  
**[www.bfc.com.au](http://www.bfc.com.au)**

Our capabilities include:

- Industrial buildings
- Water pumping stations
- Bridging
- Project management
- Water retaining structures
- Foundations
- Earthworks
- Landscaping and paving
- Roads
- Car-parks
- Pipe laying
- Steel erection
- Ballast
- Tunnelling

drawing: rush \wright associates



We have strong policies and processes in relation to quality, OH&S, industrial relations, training and the environment.

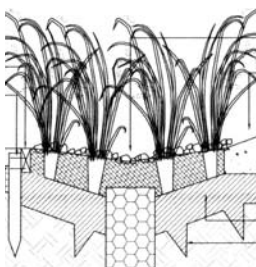
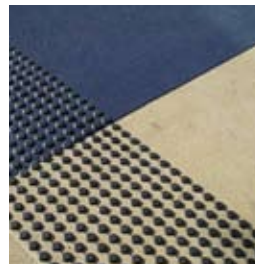
BFC has an enviable record for quality. Through formalised processes and documentation we are continually improving our Quality Assurance and OH&S systems, both of which meet the requirements of ISO 9001 and AS/NZS 4801 respectively. All our road construction is carried out to VicRoad specifications. Pavement testing and reporting, using NATA registered laboratories, are an integral part of our QA process. Our focus on quality and improving overall performance ensures that our customers receive value and contracts are completed safely and reliably.

For the fifteenth year BFC has achieved a zero lost time due to injury record in the high-risk construction industry in which we perform much of our work. We make health and safety an integral part of our work and have a proven commitment to safe work practices, safety training, supervision and a safe work environment.

We are committed to responsible environmental management and the formulation of our environmental policy to meet the requirements of ISO 14001. We comply with all relevant regulations, legislation and construction industry codes of practice and our policies deliver social, economic and environmental benefits to the community.

A skills register and training matrix are maintained for all members of our workforce and we are committed to providing training opportunities for our employees to upgrade their skills and capabilities.

We value good industrial relations and maintain productive and mutually beneficial relationships with our employees.



Our various projects throughout Melbourne include the construction of landscaped areas within school campuses and the Point Gellibrand Coastal Heritage Park for Parks Victoria. The projects have involved the construction of roads, pathways and the installation of park furniture.

We provide a high quality construction service that is completed safely, on schedule, to budget and environmentally sound. We are proud of our company's record in achieving the objectives of our customers through highly regarded construction management, innovative design solutions and the quality, dedication and experience of our employees. This commitment creates value for our customers, as well as pride and challenges to our employees and subcontractors.

We offer our customers sound financial assurance in relation to contracts. Dunn & Bradstreet Australia list our company's financial condition as strong – in the top three percent of our industry.

The majority of our business is repeat business that comes from customers with whom we have long-standing relationships – organizations including Parks Victoria, Toyota and a host of highly reputable entities that have been very pleased with the quality and diverse range of services we have been providing in Melbourne for seventeen years.

We invite you to contact us regarding any landscaping, paving, road works or other construction projects.

**Berne Fleming**  
*Managing Director*



Berne Fleming Civil Pty Ltd  
PO Box 1127, Carlton, Vic 3053  
Tel: (03) 9326 6050  
Fax: (03) 9326 8842  
E-mail: [bfc@bfc.com.au](mailto:bfc@bfc.com.au)  
Web: [www.bfc.com.au](http://www.bfc.com.au)

