

Informed

Summer 2010/11

B

F

C



In this issue:

Construction value, trust and quality – we know what is required

Page 2

Preliminary budget construction costs

Page 2

Recent projects

Page 3

New construction project for BOC Australia

Page 3



We're celebrating 20 years construction (and design and construction) activity in Melbourne.

Work carried out for many of Australia's most productive, profitable, conservative and forward thinking companies – businesses that demand value from their service providers.



Welcome to our 2010 edition of *Informed*

The Berne Fleming Civil culture consists of a strong work ethic and an unwavering focus on engineering excellence. It has driven our company since its inception in 1990, and through the recent difficult 18 months.

Our construction service encompasses all aspects of engineering, building and pavement construction, supervision, management and advice. We provide cost budgets and tackle design and construct projects for you through alliances with national design houses. We will take your project through the planning and building permit stages and on through to final completion.

We believe in getting things done – of doing the job well, attending to the nuts and bolts of a project from start to finish. This takes enthusiasm, energy and anticipation. We believe in superior quality and service to our customers.

We are committed to creating and maintaining long-term relationships with our customers. Once a project is in-house we afford our staff a great degree of freedom and

encourage informal communication between colleagues and customers – ensuring the right people will be involved in solutions to any problems.

During 2009 and 2010 our business activity shifted dramatically away from our traditional base of buildings and pavements for manufacturers and the private sector. As a result of the Federal Government's 'Stimulus Packages', over the last 12 months we have been more heavily involved with government projects – predominantly car parks, foundations and roads for schools and hospitals.

The manufacturing sector was hit extremely hard by the global financial crisis. Project sizes and turnover contracted by 40 percent on 2008 levels. With a more positive outlook now evident in the sector, we are currently getting an increasing number of inquiries from manufacturers and we anticipate this will translate into a healthier turnover in the period ahead.



Preliminary budget construction costs

In our 2008 edition of *Informed* we outlined preliminary budget construction costs. Those prices we repeat below as they have remained constant during the past 18 months.

- Industrial Buildings – \$900.00 m²
- Concrete Foundations – \$720.00 m³
- Carparks – \$120.00 m²
- Roads – \$130.00 m²
- Heavy Concrete Pavements – \$130.00 m²



New construction project for BOC Australia

We were recently awarded the contract to construct steel roof structures, footings and raised concrete docks at the Preston facility of BOC – the main cylinder filling site for Victoria.

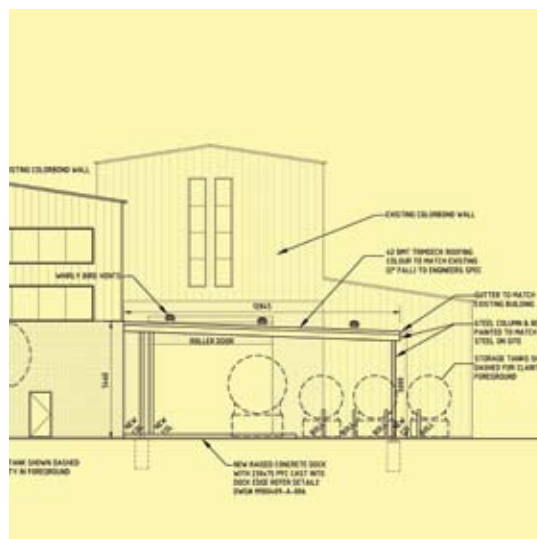
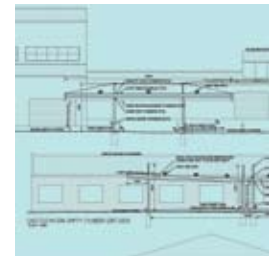
The works include builder's preliminaries, scheduling, on-site measurements, shop drawings for structural steel details and fabrication, ordering of all materials, labour and installation, supervision, commissioning of all equipment, service and warranty.

The scope of the work, to be undertaken in an operating facility, includes cutting and demolishing existing concrete for new footings; installation of stormwater pipes, galvanised compressed air lines and 3-phase electrical cables; concrete footings to engineer's specifications; raised concrete docks; supply and installation of structural steel and roofing, vents, insulation, concrete slabs, bollards and guard rails; new electrical services sub-board, all lighting, etc.



Recent projects

- Concrete foundation for large silo and bunded truck load facility - Geelong
- Asphalt netball and volley ball courts at St Martin de Porres Primary School
- Construction of roads and car parks at Werribee Mercy Hospital
- Foundation preparation for 15 Federally-funded school projects
- Replacement of asbestos cladding for Goodman Fielder
- Structural awning for tanker unloading at Goodman Fielder
- Concrete foundation for Metcon-Schiavello
- Heavy duty concrete pavement for Air Liquide tanker dispatch area
- Heavy fabricated steel sub structure and suspended concrete slab for Housing Commission flats Richmond



Our commitment:

Safety above all else – Everybody goes home without harm at the end of the day

Integrity – Honesty, respect and equitable treatment for all, without compromise

Relationships – Committed to creating and maintaining long-term relationships

Fair return – Reward for all commensurate with the value delivered – a fair days pay for a fair days work.



Further information on the scope of our projects can be found on our website

www.bfc.com.au



Berne Fleming Civil Pty Ltd
PO Box 1127, Carlton, Vic 3053
Tel: (03) 9326 6050
Fax: (03) 9326 8842
E-mail: bfc@bfc.com.au
Web: www.bfc.com.au